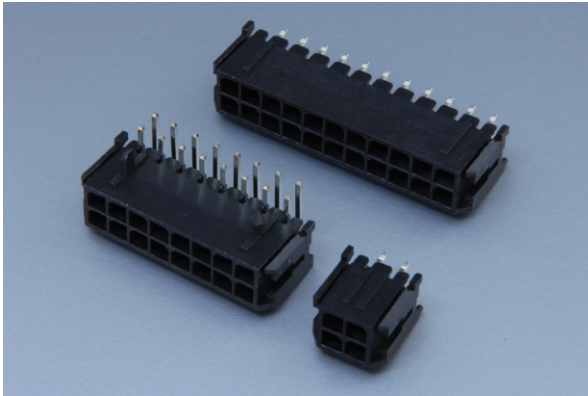


11111



Pitch 3.0mm Wire to Board Connectors



PERFORMANCE

Electrical Rating: AC/DC 250V 0.8~3A
 額定電壓電流
 Insulation Resistance: 1000MΩ min.
 絕緣阻抗
 Withstanding Voltage: 1500V AC/minute
 耐電壓
 Temperature Range: -40°C~+105°C
 適用溫度



CONNECTOR - Tape Entry

Part No.: MDK11111P1~MDK11111P12

產品編號

Material: Housing: HTN 94V-0

材質 塑膠座

Contact Pin: Brass, Tin-plated

接觸針 黃銅, 鍍錫

Suitable Contact:

配合端子

Suitable Housing:

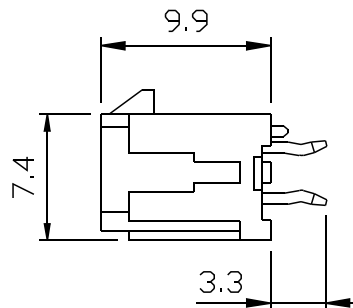
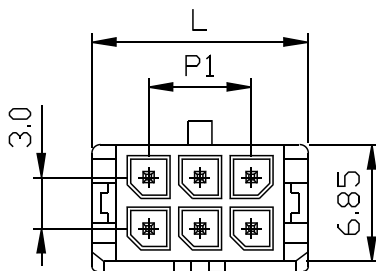
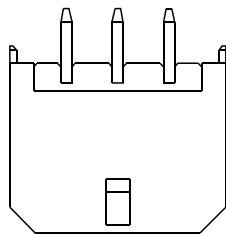
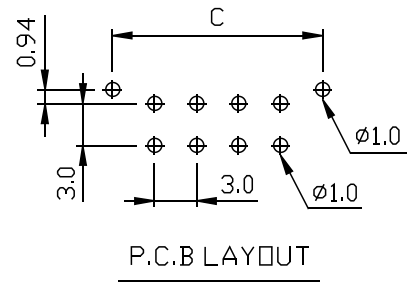
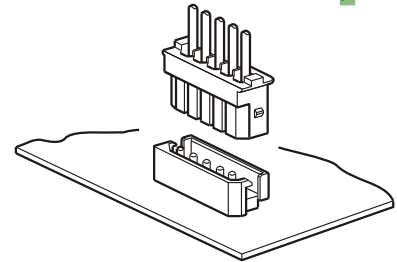
配合塑膠

Applicable Wire: AWG# 22~28

適用電線

Packing: 500pcs/tray.

包裝數



TOLERANCE	
X.	±0.5
X.X	±0.25
X.XX	±0.2
X.XXX	±0.08

Unit: mm

Tolerance: ± 0.20 ± 0.15					Tolerance: ± 0.30 ± 0.25					Tolerance: ± 0.40 ± 0.35				
Part No.	POS.	L	P1	C	Part No.	POS.	L	P1	C	Part No.	POS.	L	P1	C
MDK11111P1	2x1	6.65	--	6.00	MDK11111P5	2x5	18.65	12.00	18.00	MDK11111P9	2x9	30.70	24.00	30.00
MDK11111P2	2x2	9.65	3.00	9.00	MDK11111P6	2x6	21.65	15.00	21.00	MDK11111P10	2x10	33.70	27.00	33.00
MDK11111P3	2x3	12.65	6.00	12.00	MDK11111P7	2x7	24.65	18.00	24.00	MDK11111P11	2x11	36.70	30.00	36.00
MDK11111P4	2x4	15.65	9.00	15.00	MDK11111P8	2x8	27.70	21.00	27.00	MDK11111P12	2x12	39.70	33.00	39.00

Behave in conformity with continual product development policy, SinSheng (STM) reserves the right of specification changing of contents described in this catalogue any time and without prior notice. Please contact the sales department nearby for most updated information.
 由於產品持續開發的政策, 信盛(STM)保留隨時變更本目錄所述之規格且不需提前通知的權利, 請連繫業務處查詢最新的產品資訊。

3.0mm

11111 Wire to Board Connectors

CONNECTOR - Side Entry

Part No.: MDK11111P1R~MDK11111P12R

產品編號

Material: Housing: HTN 94V-0

材質

塑膠座

Contact Pin: Brass, Tin-plated

接觸針

黃銅, 鍍錫

Suitable Contact:

配合端子

Suitable Housing:

配合塑膠

Applicable Wire: AWG# 22~28

適用電線

Packing: 72pcs/tray

包裝數

PERFORMANCE

Electrical Rating: AC/DC 250V 0.8~3A

額定電壓電流

Insulation Resistance: 1000MΩ min.

絕緣阻抗

Withstanding Voltage: 1500V AC/minute

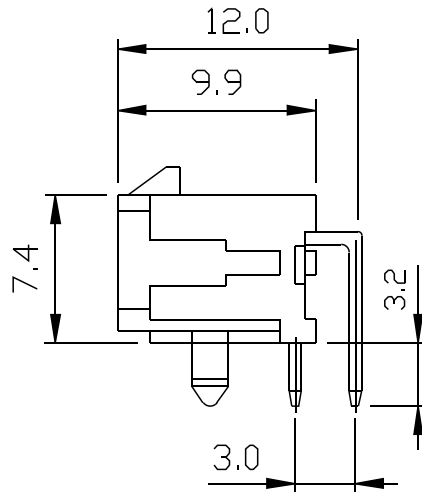
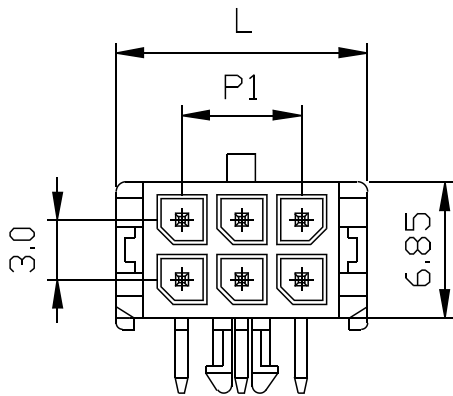
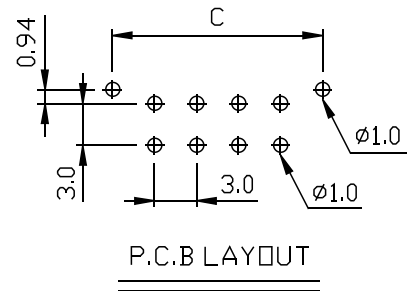
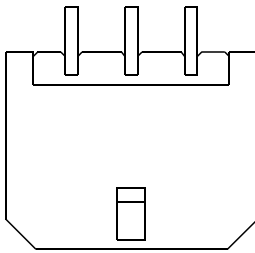
耐電壓

Temperature Range: -40°C~+105°C

適用溫度



3.0mm



TOLERANCE	
X.	±0.5
X.X	±0.25
X.XX	±0.2
X.XXX	±0.08

Tolerance: ± 0.20 ± 0.15					Tolerance: ± 0.30 ± 0.25					Tolerance: ± 0.40 ± 0.35					Unit: mm
Part No.	POS.	L	P1	C	Part No.	POS.	L	P1	C	Part No.	POS.	L	P1	C	
MDK11111P1R	2x1	6.65	--	--	MDK11111P5R	2x5	18.65	12.00	7.70	MDK11111P9R	2x9	30.70	24.00	19.70	
MDK11111P2R	2x2	9.65	3.00	--	MDK11111P6R	2x6	21.65	15.00	10.70	MDK11111P10R	2x10	33.70	27.00	22.70	
MDK11111P3R	2x3	12.65	6.00	--	MDK11111P7R	2x7	24.65	18.00	13.70	MDK11111P11R	2x11	36.70	30.00	25.70	
MDK11111P4R	2x4	15.65	9.00	4.70	MDK11111P8R	2x8	27.70	21.00	16.70	MDK11111P12R	2x12	39.70	33.00	28.70	